

# JAMA<sup>®</sup>

Journal of the  
American Medical Association

## Research

### Original Investigation

**814** Temporal Trends in Treatment and Subsequent Neoplasm Risk Among 5-Year Survivors of Childhood Cancer, 1970-2015  
LM Tarotico and Coauthors

**825** Association of Type 1 Diabetes vs Type 2 Diabetes Diagnosed During Childhood and Adolescence With Complications During Teenage Years and Young Adulthood

D Dabelea and Coauthors for the SEARCH for Diabetes in Youth Research Group

**836** Association of Antithrombotic Drug Use With Subdural Hematoma Risk

D Giet and Coauthors

## Opinion

### Viewpoint

**801** Step Therapy—Clinical Algorithms, Legislation, and Optimal Prescribing  
MA Fischer and J Avorn

**803** Linking Immunization Status and Eligibility for Welfare and Benefits Payments: The Australian “No Job, No Pay” Legislation  
YT Yang and DM Studdert

**805** Better Evidence to Guide Payment Reforms: Recognizing the Importance of Perspective  
WH Shrank, RS Saunders, and M McClellan

**807** Surviving Sepsis Guidelines: A Continuous Move Toward Better Care of Patients With Sepsis  
D De Backer and T Dorman

### A Piece of My Mind

**809** Eradicating a Genetic Mutation  
MG Sackem

### Editorial

**810** Reducing Overuse—Is Patient Safety the Answer?

A Liptz-Snyderman and D Korenstein

**812** Thank You to JAMA Authors, Peer Reviewers, and Readers

PB Fontanarosa, H Bauchner, and RM Golub

## Clinical Review & Education

### JAMA Clinical Guidelines Synopsis

**847** Management of Sepsis and Septic Shock  
MD Howell and AM Davis

### JAMA Professionalism

**849** Is Excessive Resource Utilization an Adverse Event?  
JA Zapata and Coauthors

### JAMA Clinical Challenge

**851** A 55-Year-Old Man With a Painful Rash on the Sole of His Foot  
R Vangisaram and SK Tying

### Continuing Medical Education

**853** Online Quiz Questions

### JAMA Patient Page

**880** Transjugular Intrahepatic Portosystemic Shunts

## LETTERS

### Research Letter

**854** Difference Between Estimated Purchase Price and Insurance Payments for Knee and Hip Implants in Privately Insured Patients Younger Than 65 Years  
VJ Tseng and KD Mandl

### Comment & Response

**855** High-Flow Oxygen vs Noninvasive Ventilation for Postextubation Respiratory Failure

**856** Prioritizing Shared Decision Making

**857** Disclosure of Disabilities by Medical Students

## NEWS & ANALYSIS

### Medical News & Perspectives

**793** Amid Reports of Infant Deaths, FTC Cracks Down on Homeopathy While FDA Investigates

### The JAMA Forum

**795** What Might an ACA Replacement Plan Look Like?

**797** Health Agencies Update

**798** Clinical Trials Update

**799** News From the Centers for Disease Control and Prevention

## HUMANITIES

### The Arts and Medicine

**790** Rembrandt's Senses: Lessons in “Perceiving” the Patient  
CC Math

**859** Poetry and Medicine

**860** JAMA Revisited

**Issue Highlights and Continued Contents on page 783**

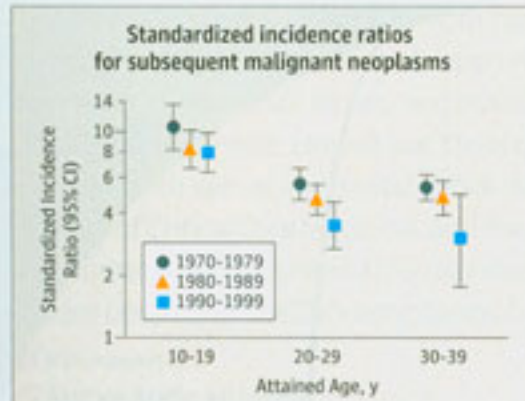




# In This Issue of JAMA

## Research

### Neoplasm Risk in 5-Year Survivors of Childhood Cancer 814



Childhood cancer treatment has been modified over time with the hope of reducing the incidence of subsequent neoplasms. To learn whether the risk of new neoplasms has changed in recent decades, Turcotte and colleagues conducted a retrospective, multicenter cohort study of 23 603 survivors of childhood cancer in the United States and Canada. The investigators found that the risk of subsequent malignancies at 15 years after

initial cancer diagnosis decreased for patients diagnosed in the 1990s in comparison with those diagnosed in the 1970s; the lower risk was associated with reductions in the dose of therapeutic radiation.

**CME** [jamanetworkcme.com](http://jamanetworkcme.com)

### Complications of Type 1 vs Type 2 Diabetes 825

Prior studies have suggested that adolescents and young adults with type 2 diabetes may be more likely than those with type 1 diabetes to have adverse health outcomes. In this article describing an observational study of 2018 participants diagnosed with diabetes before age 20 years, Dabelea and colleagues report that the prevalence of diabetic kidney disease, retinopathy, and other complications and comorbidities was greater in patients with type 2 diabetes than in patients with type 1 diabetes, but frequent in both groups. Their findings support early monitoring of these patients for development of complications.

**CME** [jamanetworkcme.com](http://jamanetworkcme.com)

### Antithrombotic Drug Use and Subdural Hematoma 836

The observed increase in the incidence of subdural hematoma may be related to increased use of antithrombotic drugs. To estimate the association between antithrombotic drug use and subdural hematoma, Gaist and colleagues conducted a case-control study of 10 010 patients aged 20 to 89 years with a discharge diagnosis of subdural hematoma matched to 400 380 individuals from the general population in Denmark. The authors found an increased risk of subdural hematoma associated with the use of antithrombotic drugs, particularly vitamin K antagonists. The greatest increase in the incidence of subdural hematoma was among patients older than 75 years.



## Humanities

### The Arts and Medicine

**790** Rembrandt's Senses: Lessons in "Perceiving" the Patient  
CC Muth

### Poetry and Medicine

**859** Pleural Effusion  
C Barrett

### JAMA Revisited

**860** The Young Doctor and Health Insurance

## Opinion

### Viewpoint

**801** Step Therapy—Clinical Algorithms, Legislation, and Optimal Prescribing  
MA Fischer and J Avorn

**803** Linking Immunization Status and Eligibility for Welfare and Benefits Payments: The Australian "No Job, No Pay" Legislation  
YT Yang and DM Studdert

**805** Better Evidence to Guide Payment Reforms: Recognizing the Importance of Perspective  
WH Shrank, RS Saunders, and M McClellan

**807** Surviving Sepsis Guidelines: A Continuous Move Toward Better Care of Patients With Sepsis  
D De Backer and T Dorman

### A Piece of My Mind

**809** Eradicating a Genetic Mutation  
MG Sackeim

### Editorial

**810** Reducing Overuse—Is Patient Safety the Answer?  
A Lipitz-Snyderman and D Korenstein

**812** Thank You to JAMA Authors, Peer Reviewers, and Readers  
PB Fontanarosa, H Bauchner, and RM Golub

## LETTERS

### Research Letter

**854** Difference Between Estimated Purchase Price and Insurance Payments for Knee and Hip Implants in Privately Insured Patients Younger Than 65 Years  
Y-J Tseng and KD Mandl

### Comment & Response

**855** High-Flow Oxygen vs Noninvasive Ventilation for Postextubation Respiratory Failure

**856** Prioritizing Shared Decision Making

**857** Disclosure of Disabilities by Medical Students

**858** Correction

Editor in Chief  
Howard Bauchner, MD

**133 YEARS**  
OF CONTINUOUS  
PUBLICATION



# In This Issue of JAMA

## Clinical Review & Education

### Management of Sepsis and Septic Shock 847

The body's response to infection can cause life-threatening organ dysfunction and tissue hypoperfusion. Management of sepsis requires early recognition and management of infection, hemodynamic issues, and other organ dysfunctions. In this JAMA Clinical Guidelines Synopsis article, Howell and Davis discuss a guideline for the clinical management of patients with sepsis and septic shock developed by the Surviving Sepsis Campaign, the Society of Critical Care Medicine, and the European Society of Intensive Care Medicine and recommend topics in need of further study. In a Viewpoint, De Backer and Dorman discuss recent updates of the Surviving Sepsis Guidelines.

Viewpoint 807

Author Audio Interview [jama.com](http://jama.com)

### Excessive Resource Utilization 849

National accreditation organizations mandate patient safety reviews to identify systems errors and improve the quality of care. In this article in the JAMA Professionalism series, Zapata and colleagues discuss a patient who may have been harmed by excessive testing during a hospitalization. The patient's primary care physician asked the hospital's patient safety committee to review her management in the hospital, but the committee was uncertain whether a case of resource utilization was within its purview. In an Editorial, Lipitz-Snyderman and Korenstein discuss the implications of framing overuse of medical care as a patient safety problem.

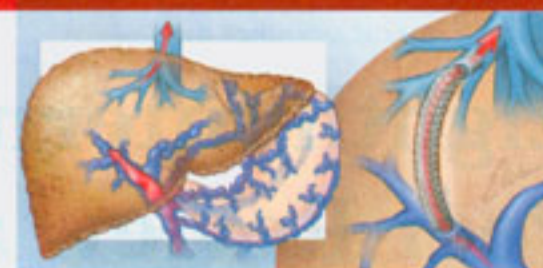
Editorial 810

Author Audio Interview [jama.com](http://jama.com) CME [jamanetworkcme.com](http://jamanetworkcme.com)

### A 55-Year-Old Man With a Painful Rash on the Sole of His Foot 851



This JAMA Clinical Challenge article by Vangipuram and Tying presents a 55-year-old man with a 6-day history of a painful rash on the sole of his right foot. Physical examination revealed 2- to 3-mm grouped vesicles on an erythematous base in a discrete area of the sole of the right foot and no additional rashes elsewhere on the body. What would you do next?



#### JAMA Patient Page

880 Transjugular Intrahepatic Portosystemic Shunts

#### NEWS & ANALYSIS

##### Medical News & Perspectives

793 Amid Reports of Infant Deaths, FTC Cracks Down on Homeopathy While FDA Investigates

##### The JAMA Forum

795 What Might an ACA Replacement Plan Look Like?

##### 797 Health Agencies Update

For Health Disparities, Don't Ignore the Microbiome

VHA Initiative Reduces Risky Opioid Prescribing

Public-Private Partnership Speeds Investigator Access to Cancer Drugs

##### 798 Clinical Trials Update

Crizanlizumab Prevents Sickle Cell Pain Crises

Listerine May Help Control Spread of Gonorrhea

Improving Shared Decision Making in Management of Dementia

##### 799 News From the CDC

Hospital Costs for Birth Defects Reach Tens of Billions

Youths Recognize Costs of Smoking

## Online @ [jama.com](http://jama.com)



#### Editor's Audio Summary

Howard Bauchner, MD, summarizes and comments on this week's issue.

#### Sepsis Presentations

Watch video presentations from the Society of Critical Care Medicine Congress on the updated Surviving Sepsis Guidelines, available with "Management of Sepsis and Septic Shock"

#### Author Interview



**AUDIO** Interview with Michael D. Howell, MD, MPH, author of "Management of Sepsis and Septic Shock"

**AUDIO** Interview with Andrew R. Lai, MD, MPH, author of "Is Excessive Resource Utilization an Adverse Event?"

#### Departments

787 Staff Listing

853 CME Questions

861 JAMA Peer Reviewers in 2016

875 Classified Advertising

878 Journal Advertiser Index

879 Contact Information

#### Instructions for Authors

[jama.com/public/instructionsforauthors.aspx](http://jama.com/public/instructionsforauthors.aspx)